

Bistro Table

vitra.

Ronan & Erwan Bouroullec, 2009/2010



The Bistro Tables were conceived in connection with the Softshell Chair and reiterate the shape of its elegant cruciform base. Due to an understated aesthetic, each table can be combined with a wide variety of chairs; the versions with a solid core top are also suited for outdoor use. The Bistro Tables are available in both sitting and standing heights.

Bistro Table

The Bistro Tables by Ronan and Erwan Bouroullec share the same elegant cruciform base as the Softshell Chair. Due to an understated aesthetic, each table can be combined with a wide variety of chairs – and the variants with a solid core top are also suited for outdoor use. The Bistro Tables are available with round or rectangular table tops and also in a standing-height version.

Bistro Stand-up Table

The Bistro Tables were developed by Ronan and Erwan Bouroullec in conjunction with the Softshell Chair and feature the same elegant cruciform base. Thanks to an understated design, the Bistro Tables can be used in a wide variety of interior settings. In versions with a solid core top, the round standing-height tables (110 cm high) are also suited for outdoor use.

Materials

- **Table tops come in three materials:** melamine faced, white surface, smooth straight plastic edge (19 mm); light or dark oak veneer, lacquer finish (Europe) (19 mm); solid core material in the colours white or black with black edge (12 mm). The solid core table top in black has an additional anti-fingerprint coating.



Outdoor use: version with solid core table top suitable for utilisation outdoors on a temporary or seasonal basis, following care instructions. After prolonged exposure to the elements, clean and store away in a dry, sheltered place to ensure lasting use and avoid any deterioration in appearance.

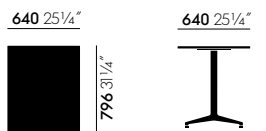
Bistro Table

- **Base:** pre-galvanised, powder-coated in basic dark (RAL 9004). The height of the base including screw-in glides is 715 mm; the glides can be adjusted (max. extension 10 mm) for levelling on uneven floors.

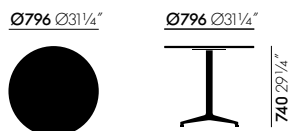
Bistro Stand-up Table

- **Base:** pre-galvanised, powder-coated in basic dark (RAL 9004). The height of the base including screw-in glides is 1080 mm; the glides can be adjusted (max. extension 10 mm) for levelling on uneven floors.

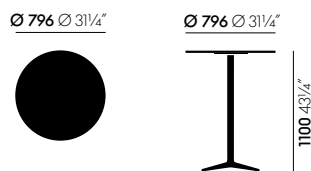
DIMENSIONS



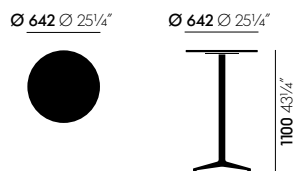
Rectangular table, indoor, 640 x 796 mm



Round table, indoor, Ø 796 mm



Round table, indoor, Ø 796 mm



Round table, indoor, Ø 642 mm

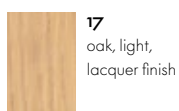
SURFACES AND COLOURS



01
white (textured)



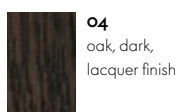
03
white (textured)



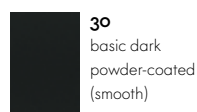
17
oak, light,
lacquer finish



30
black (textured)



04
oak, dark,
lacquer finish



30
basic dark
powder-coated
(smooth)

Table top

Base

