

Mynt

Erwan Bouroullec, 2025



vitra.

www.vitra.com/mynt



Mynt

Erwan Bouroullec, 2025

vitra.



Mynt brings a new way of sitting to offices, public spaces and home interiors. It responds to the fact that people no longer sit in the same chair for lengthy periods of time and instead often share chairs with other users. In office settings, Mynt takes on the home-like appeal of a universal chair, while in domestic interiors, it provides the dynamism of an office chair – thus defying conventional categorisations.

The core element is its patented mechanism, which is activated by body weight and tilts forwards or backwards depending on shifts in the sitter's position – with the seat moving independently of the backrest. The movement resistance automatically adapts to the user's weight – only the height has to be adjusted.

The slender mechanism is an integral part of Mynt's design and plays a key role in the chair's understated, home-like aesthetic. The seat and backrest are available in wood veneer or recycled polyamide made from 100% post-industrial sources and can be replaced or exchanged for a different material or colour option. In the variant with a four-star base, glides can be replaced with castors and vice versa – Mynt fulfils the relevant office standards with both versions.

Upholstered covers are available for the seat and backrest. Thanks to zip fasteners, the two upholstery elements can be easily removed for cleaning or replacement – allowing Mynt to retain its fresh look and flexibly adapt to new needs.

Materials

- **Office swivel chair in accordance with EN 1335.**
- **Mechanical unit:** mechanism in aluminium with automatic weight adjustment and locking feature. Equipped as standard with seat height adjustment and forward tilt.
- **Backrest:** backrest with armrests, made of 100% recycled post-industrial polyamide (100% recyclable) or natural oak veneer.
- **Seat:** made of 100% recycled post-industrial polyamide (100% recyclable) or natural oak veneer.
- **Upholstery:** seat cushion made of recyclable polyurethane foam V-Foam with fabric cover, back cushion made of polyester fibre with fabric cover.
- **Base:** four-star base in aluminium with powder-coated or blasted finish, equipped with double castors (Ø 50 mm) or glides, mechanism and frame colour matched to base; or five-star base in polyamide (deep black), equipped with double castors (Ø 50 mm), mechanism and matching frame in a choice of colour versions.
- **Packaging:** delivered assembled in polyethylene bag, on request in cardboard box.
- Due to British fire safety regulations, V-Foam is not used in the UK. Fire retardants would have to be added to the formula, which would make it impossible to recycle V-Foam separately.

1-5	Mynt
6-7	Designer Erwan Bouroullec
8-13	The mechanical unit
14-29	Usage categories
30-31	Replace and repair

32-33	Removable covers
34-35	Materials
36-37	Environmental information
42-43	Surface finishes and colours
44-47	Upholstery fabrics

48-53	Colour moods
54-55	Dimensions



'Apart from the fact that Mynt had to perform, it had to be inviting – inviting for any kind of person, any kind of task, at any time.'

Erwan Bouroullec



The designer Erwan Bouroullec (*1976 in Quimper, Frankreich) is a graduate of the École Nationale Supérieure d'Arts de Paris-Cergy (ENSAPC). After completing his studies in 1998, he joined the studio that had been founded by his brother Ronan in 1995 and the two formed a complementary duo. They have collaborated with Vitra since 1999 on the development of numerous important products and concepts for home and office. In 2023 the brothers parted ways and now work independently from one another.



Redefines dynamic sitting

As with cycling, climbing stairs and countless other everyday pursuits, the body remains in a state of active balance when sitting on Mynt thanks to its patented mechanism that prompts the user to continually perform a range of smaller and larger movements.

Mynt not only provides a new seating experience, but dynamic sitting has also been shown to have a positive impact on physical health and well-being.



The mechanical unit

The core element of Mynt is its patented mechanism, which is activated by body weight and tilts forwards or backwards depending on shifts in the sitter's position – with the seat moving independently of the backrest.



Automatic weight adjustment

The movement resistance automatically adapts to the user's weight – only the height has to be adjusted.



Forward tilt and restriction mode

Should the user wish to restrict the mechanism's range of movement – for temporary upright sitting, for example – this can be achieved by operating a lever under the seat.

Fit for any task and space

vitra.

vitra.

Mynt defies conventional categorisations and combines the home-like appeal and unassuming aesthetic of a universal chair with the ergonomics of a dynamic office chair. It thus brings a new way of sitting to any setting: a versatile all-rounder ideal for the office – as well as shared spaces – its understated design also makes an attractive addition to home dining tables.



The seat and backrest come in wood veneer or recycled polyamide made from 100% post-industrial material. Upholstered covers can be ordered for both the seat and backrest.

The variant with a four-star base can be equipped with either glides or castors – Mynt fulfils the relevant office standards with both versions. The chair can also be configured as a five-star base in plastic with castors.



Work Space



Communal Table



Meeting Space



Focus Space



Communal Kitchen



Home Office



Dining Table

Future-proof

Mynt is designed for sustainable longevity with exchangeable parts: the upholstery, glides and castors may be removed and replaced by the users themselves, while the seat and backrest in recycled plastic or wood can be exchanged by trained service staff. Mynt consists of up to 86% recycled materials and is 99% recyclable at the end of its product life. Its seat cushion contains the world's first economically recyclable polyurethane foam, which was developed by Vitra in collaboration with BASF.



Replace and repair

vitra.

vitra.

Seat and back shells: made of European plywood.

The shells are held together with screws and can be replaced by trained service staff.



Frame and base: made of aluminium with 95% recycled content, 100% recyclable

All parts are held together with screws and can be replaced and repaired by trained service staff.

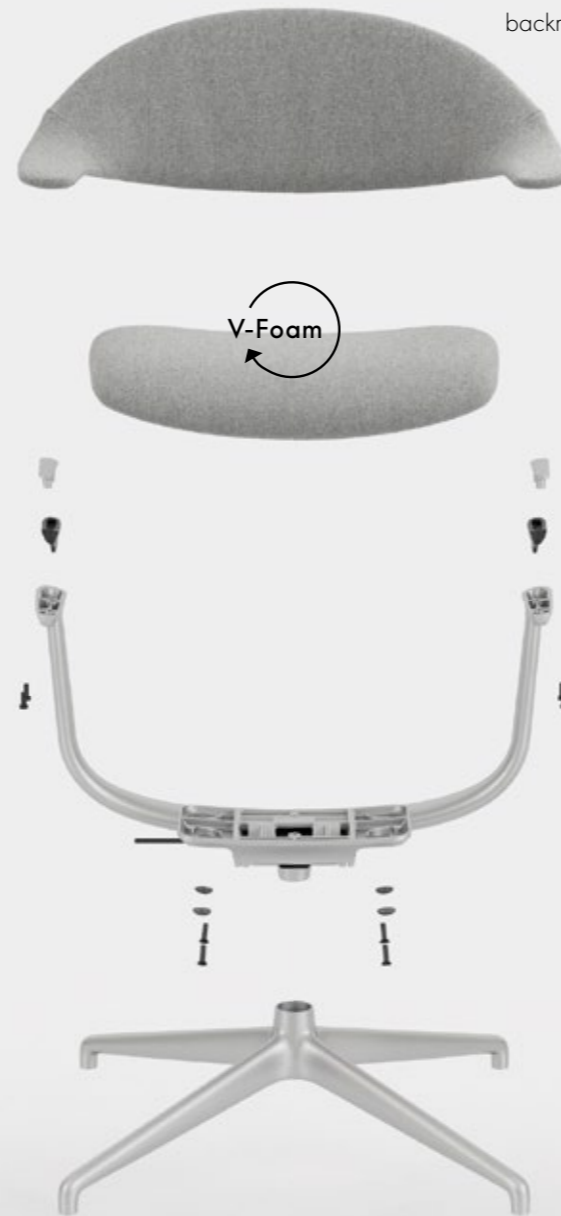


Glides and castors:

can be replaced by the users themselves and ordered as spare parts from Vitra's online shop.

Seat and backrest upholstery: in the fabrics Plano, Laser RE and Cosy 2

Seat upholstery made of recyclable polyurethane foam with fabric cover, backrest upholstery made of polyester wadding with fabric cover.



Seat and back shells: made from 100% recycled post- industrial polyamide, 100% recyclable

The shells are held together with screws and can be replaced by trained service staff.

Gas spring:

can be replaced by trained service staff.



Replace

Mynt is designed for a long life cycle. Its upholstery, glides and castors can be removed and replaced by the users themselves.

Spare parts are available for order [here](#).



Repair

The seat and backrest and the gas spring must be replaced by trained service staff.

Please contact your local dealer or use the service contact form on www.vitra.com to reach the Vitra service department.

Removable covers

Thanks to zip fasteners, the two upholstery elements can be easily removed for cleaning or replacement.

It is possible to retrofit Mynt with seat and backrest upholstery at any time. Seat and backrest covers may be ordered individually – including from Vitra's online shop.



Environmental consciousness finds expression in every aspect of Vitra's work. It is manifested in how Vitra's products are developed and produced, in the acquisition

of raw materials and in the organisation of the supply chain. Every new insight is seen as an opportunity for further development.



Aluminium

Vitra most frequently uses aluminium and steel for metal components. Since 94% less energy is required to produce recycled aluminium in comparison to primary aluminium, Vitra utilises aluminium consisting of 95% recycled material whenever possible.

Depending on the product, metal surfaces are either powder-coated, chrome-plated, polished, galvanised, blasted or lacquered. A smooth or textured powder-coated finish provides colour and surface protection.

Blasted aluminium

Blasted aluminium is untreated aluminium that is refined by blasting with tiny stainless steel beads. This technique results in a reduced CO₂ footprint and is utilised for the frame, mechanism and base of Mynt.

The shot-blasted finish eliminates the need for powder coating and results in a slightly textured, highly compacted surface. Free of any coating, it is more sensitive to finger marks, though these can be easily removed with a cleaning agent and cloth. Blasted aluminium acquires a patina over time, with darker colouration and more of a matt finish.

Wood veneer

Wood is a natural material that finds extensive use at Vitra, encompassing many different forms such as veneer, MDF, particle board, paper, cardboard and solid wood. In the plywood version of Mynt, the seat and backrest shells are made from oak veneer.

A vendor declaration that certifies compliance with the European Timber Trade Regulation (EUTR) is required for each type of wooden material used in a Vitra product. Vitra also pays attention to the sustainability of the source of supply. Wood-based materials used by Vitra, such as particle board, are processed from by-products of the wood, construction and furniture industries. In accordance with the Swiss declaration of origin of solid wood, the origin of the solid wood and veneers used in Vitra furniture is stated both in the price list and on the website www.vitra.com.

Complex industrial methods are used to produce sheets of wood veneer, which are further processed by hand. In most cases, wood from a single tree is utilised for a piece of furniture to ensure the uniform appearance of all surfaces. With only two exceptions, Vitra exclusively purchases veneers with a certificate of sustainability from European producers. Vitra's veneers are finished with a protective lacquer; exposure to light will alter the colour over time.

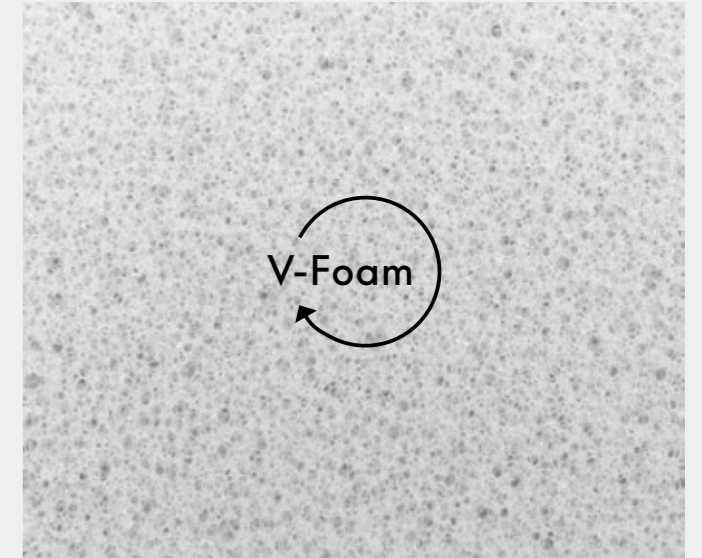


Recycled plastic

Recycled post-industrial polyamide – itself 100% recyclable – is utilised for the version of Mynt with seat and backrest shells in plastic.

Post-industrial plastics are waste materials that have been accumulated during the manufacturing process, for example in the automobile industry. They have not been previously used by consumers and are purchased as a single type of plastic. Post-industrial plastics have superior flow properties, enabling the creation of intricate shapes and glossy surfaces, and they are also food-safe.

Vitra prioritises the use of post-consumer plastics. If no post-consumer plastics are suitable for a specific product or component, Vitra checks whether a post-industrial recycling material could be a feasible alternative, favouring post-industrial waste from its own production sites.



V-Foam

Developed jointly by Vitra and BASF, V-Foam is the world's first economically recyclable polyurethane foam.

Derived from fossil fuels, polyurethane foam (PU foam) is a durable material utilised extensively in numerous industries worldwide – such as the automotive, food and furniture sectors as well as in the medical field.

Standard PU foam hardens irreversibly when heated and cannot be subsequently reprocessed and reshaped. This made all previous recycling methods energy-intensive and limited the cost-effectiveness and opportunities for recycling.

By contrast, V-Foam is 100% recyclable thanks to an innovative chemical process. It is transformed into a new polyol in an energy-efficient procedure and returned to the material cycle for use in new products. Vitra is gradually introducing V-Foam for all its upholstered furniture containing moulded foam from 2025.

- Due to British fire safety regulations, V-Foam is not used in the UK. Fire retardants would have to be added to the formula, which would make it impossible to recycle V-Foam separately.



Environmental Product Passport

The Environmental Product Passport contains information about the product carbon footprint, recycling, material composition, packaging & logistics, the supply chain and available product certificates. If you have any questions about the Environmental Product Passport or other queries about sustainability, please feel free to contact us at sustainability@vitra.com

To offer transparency with regard to a product's most important environmental factors, Vitra provides certificates from external testing institutes. For this purpose, Vitra focuses on a selection of certificates that explicitly cover key elements of the respective product.

Greenguard

The GREENGUARD label for indoor air quality recognises products that contribute to the creation of healthier indoor environments.



GS

With the GS seal for tested safety, a state-authorized inspection institute certifies the suitability and safety of the construction and monitors production at regular intervals.



BIFMA

Mynt fulfils the ANSI/BIFMA standard X5.1-2011, thus meeting the stringent safety requirements for the US market.



EPD

An EPD – environmental product declaration – provides transparency about the environmental impacts of a product throughout its life cycle, often referred to as life cycle assessment (LCA).



Vitra product warranty

Designed and manufactured for longevity, Vitra products are backed by a quality promise guiding every aspect of their development and production. Registered products qualify for either a 10- or 30-year warranty, unlocking various benefits including product identification, origin tracing, and access to designer information and care instructions. This warranty reflects Vitra's commitment to sustainability.

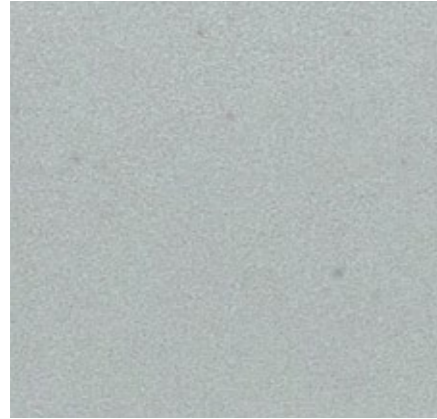
Full terms and conditions and further information are available [here](#) for review. For USA & Canada, specific conditions apply.

Mynt is eligible for the 10-year Vitra Product Warranty when registered through <https://my.vitra.com> for private use.





Back and seat (recycled plastic)



05
grey RE

Recycled plastic

Depending on the material properties required of a product, Vitra chooses different types of plastic for the manufacture of its furniture. This always raises the issue of whether new, more ecological alternatives are available, which has led to the development of various recycled plastics. Depending on the type of product and its requirements, Vitra utilises high-quality recycling materials that stem from recyclable household waste, especially used packaging, or industrial waste.



01
basic dark RE

Back and seat (plywood)



10
oak, natural, lacquer finish

Veneer

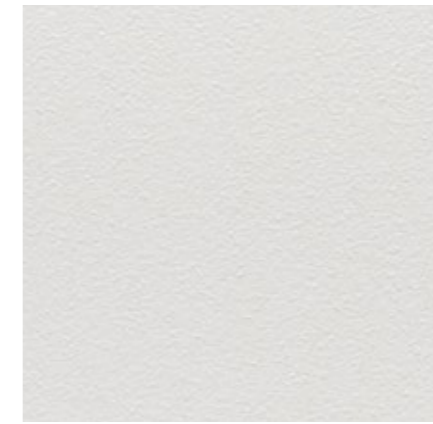
Complex industrial methods are used to produce sheets of wood veneer, which are further processed by hand. In most cases, wood from a single tree is utilised for a piece of furniture to ensure the uniform appearance of all surfaces. With only two exceptions, Vitra exclusively purchases veneers with a certificate of sustainability from European producers. Vitra's veneers are finished with a protective lacquer; exposure to light will alter the colour over time.

Frame and mechanism

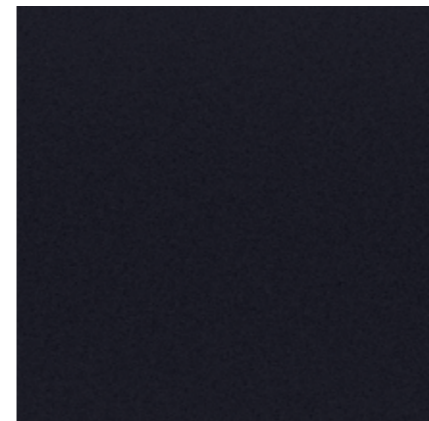
Four-star base



44
bottle green powder-coated (textured)



52
soft light powder-coated (textured)



12
deep black powder-coated (smooth)



96
blasted aluminium

Metal

Vitra most frequently uses aluminium and steel for metal components. Since 94% less energy is required to produce recycled aluminium in comparison to primary aluminium, Vitra utilises aluminium consisting of 95% recycled material whenever possible. Depending on the product, metal surfaces are either powder-coated, chrome-plated, polished, galvanised, lacquered or blasted. A smooth or textured powder-coated finish provides colour and surface protection.

Five-star base



12
deep black

Plastic

Vitra uses a variety of high-quality plastics for its furniture products, depending on the desired characteristics. Special additives are employed in the manufacture of outdoor products to retard the fading of colours caused by UV radiation. When it comes to plastics, it is always important to consider whether newer, more environmentally sensible alternatives are available. For this reason, four different plastics have been used in the production of the Panton Chair since 1967. The plastics most often used by Vitra are polypropylene and polyimide, both of which are recyclable thermoplastics.

Upholstery fabrics

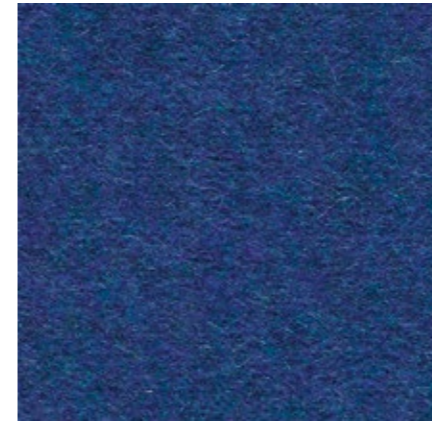
Mynt comes in a choice of 3 fabrics and a diverse range of colours.

Heavy use

Cosy 2	F80
Laser RE	F40
Plano	F30



Cosy 2 Heavy use, F80

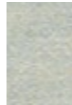






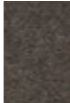









Cosy 2 is a high-quality milled woollen cloth with a warm character. The lively melange yarn emphasises the fabric's natural colours – from delicate shades to vibrant hues – and gains added elegance with colour-coordinated stitching. The fabric offers thermal comfort and excellent durability, making it suited for upholstered furniture in office settings as well as residential applications.

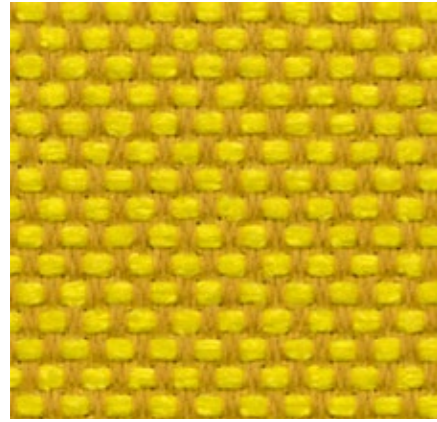
Cosy 2 is available in 15 colours.

Material	20% polyamide, 80% new wool
Weight	590 g/m ² (17.4 oz/y ²)
Width	154 cm +/- 2 cm (61")
Abrasion resistance	50,000 Martindale
Fastness to light	Type 6
Pilling	Grade 4-5
Fastness to rubbing	Grade 4-5 dry and wet

Cosy 2

 12 pale blue	 01 pebble grey
 17 reed green	 02 fossil
 18 petrol	 10 classic grey
 20 electric blue	 03 nutmeg
 21 dark blue	 19 chestnut
 11 merino black	 13 papyrus
	 14 canola
	 15 rusty orange
	 16 pale rose

Laser RE Heavy use, F40



The environmentally friendly fabric Laser RE is made from recycled polyester. It has a distinctive woven appearance, which is particularly accentuated by contrasting duotones in a varied palette of 25 colours. Practical and easy to care for, as well as durable and highly abrasion-resistant, Laser RE is also well suited for office environments.

Laser RE is available in 25 colours.

Material	100% recycled polyester
Weight	520 g/m ² (15.3 oz/y ²)
Width	144 cm +/- 2 cm (57")
Abrasion resistance	100,000 Martindale
Fastness to light	Type 6
Pilling	Grade 4-5
Fastness to rubbing	Grade 4-5 dry and wet

Laser RE



Plano Heavy use, F30



Plano is a robust plain weave with a flat, even texture. The wide palette of duotones with new, delicate washed-out shades includes many relatively neutral hues, a good number of which are coordinated with the Hopsak colour range. Thanks to its durability and longevity, Plano is also an ideal choice for office furnishings.

Plano is available in 39 colours.

Material	100% polyester
Weight	265 g/m ² (7.8 oz/y ²)
Width	142 cm +/- 2 cm (56")
Abrasion resistance	80,000 Martindale
Fastness to light	Type 6
Pilling	Grade 4-5
Fastness to rubbing	Grade 4-5 dry and wet

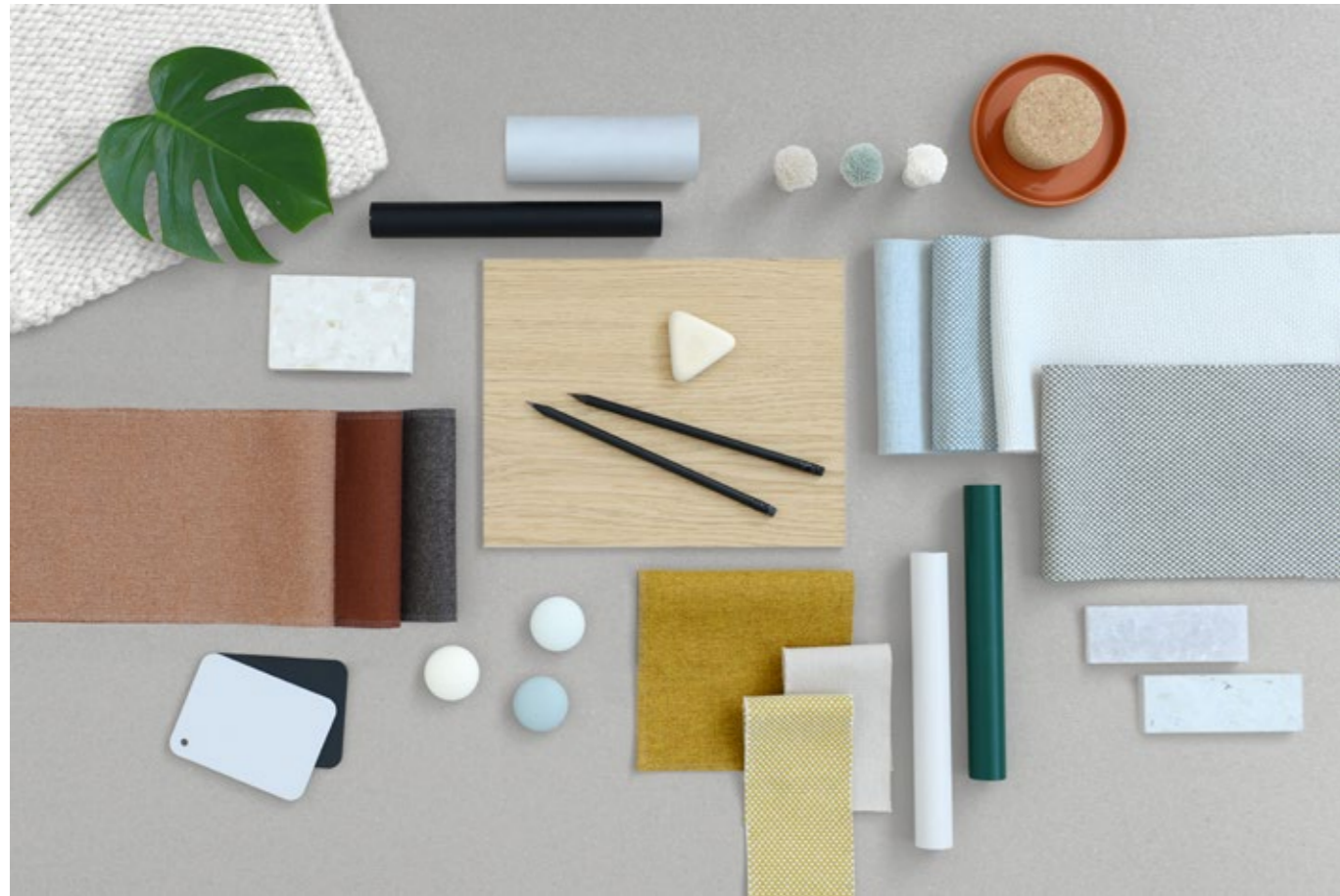
Plano



Mynt – natural tones

vitra.

With cover fabrics in muted earthy tones and wood veneer, Mynt complements environments that call for a natural aesthetic. The Cosy 2 woollen fabric provides a sense of inviting warmth, while the hard-wearing Laser RE made from recycled polyester creates subtle accents with its striking woven structure in light duotones.



You can customise your Mynt chair at vitra.com using the Vitra Product Configurator.

vitra.



Plastic, 05 grey RE
Laser RE, 65 ice blue/cream



Plastic, 05 grey RE
Cosy 2, 12 pale blue



Veneer, 10 natural oak,
with protective varnish



Plastic, 05 grey RE
Cosy 2, 14 canola



Plastic, 05 grey RE
Laser RE, 62 cream/mustard



Plastic, 05 grey RE
Laser RE, 60 cream



Veneer, 10 natural oak,
with protective varnish



Plastic, 05 grey RE
Laser RE, 60 cream



Plastic, 01 basic dark RE
Laser RE, 63 warm grey/cream



Plastic, 01 basic dark RE
Plano, 67 cognac



Plastic, 01 basic dark RE
Cosy 2, 03 nutmeg

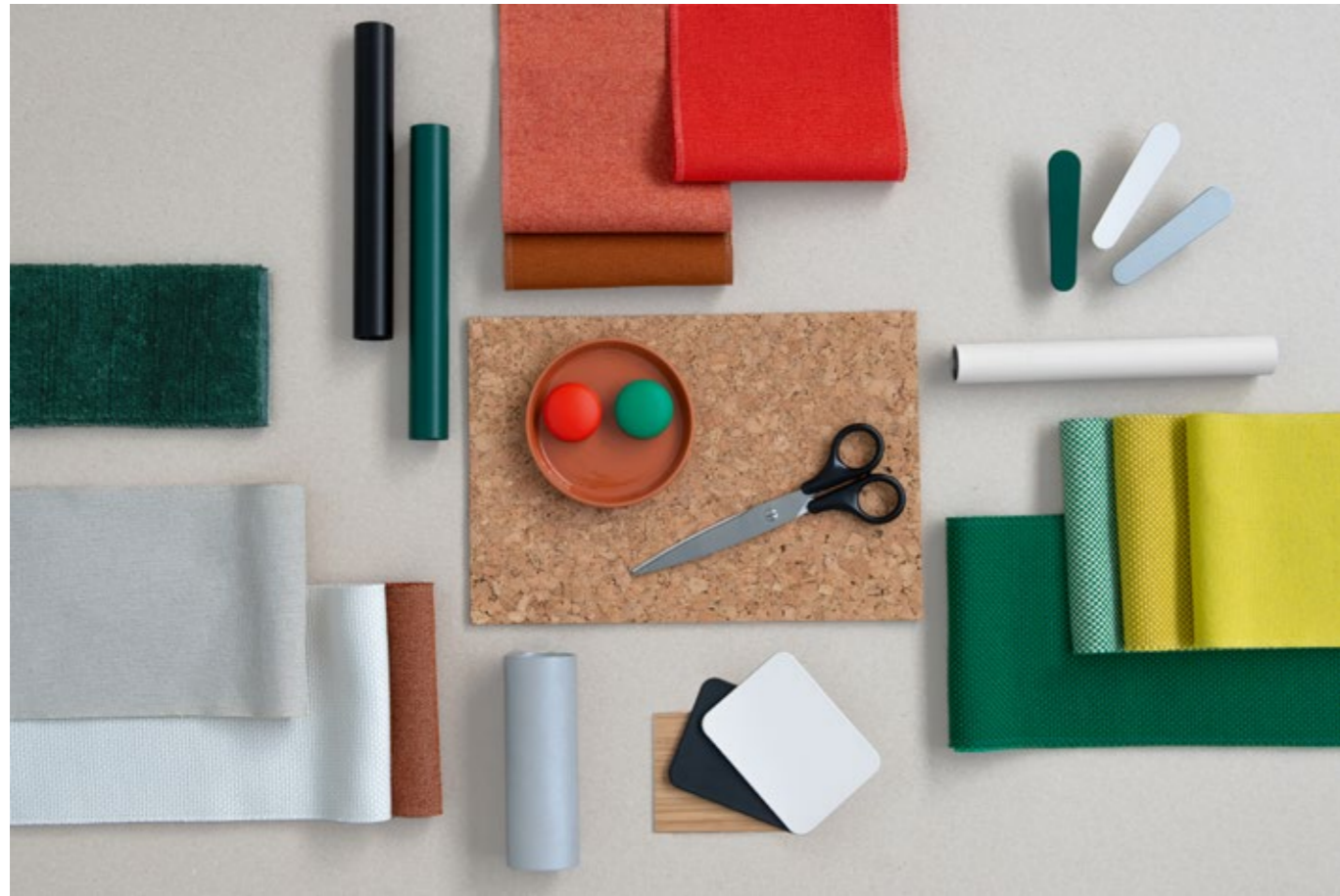


Plastic, 01 basic dark RE

Mynt – colour accents

vitra.

The interplay between the colours of the base, frame and upholstery covers can be used to form subtle or high-contrast accents. The broad palette of the cover fabrics – especially Plano – opens up nuanced worlds of colour, making it easy to find the right look for Mynt and change its appearance at any time to suit new needs and situations.



You can customise your Mynt chair at vitra.com using the Vitra Product Configurator.

vitra.



Plastic, 05 grey RE
Plano, 05 cream white/sierra grey



Plastic, 05 grey RE
Laser RE, 60 cream



Plastic, 05 grey RE
Plano, 99 cognac/parchment



Plastic, 05 grey RE
Laser RE, 72 emerald/malachite



Plastic, 05 grey RE
Plano, 39 yellow/pastel green



Plastic, 05 grey RE
Laser RE, 70 emerald/cream



Plastic, 01 basic dark RE
Cosy 2, 18 petrol



Plastic, 01 basic dark RE



Plastic, 01 basic dark RE
Cosy 2, 15 rusty orange



Plastic, 01 basic dark RE
Plano, 63 red/poppy red



Plastic, 01 basic dark RE
Cosy 2, 15 rusty orange

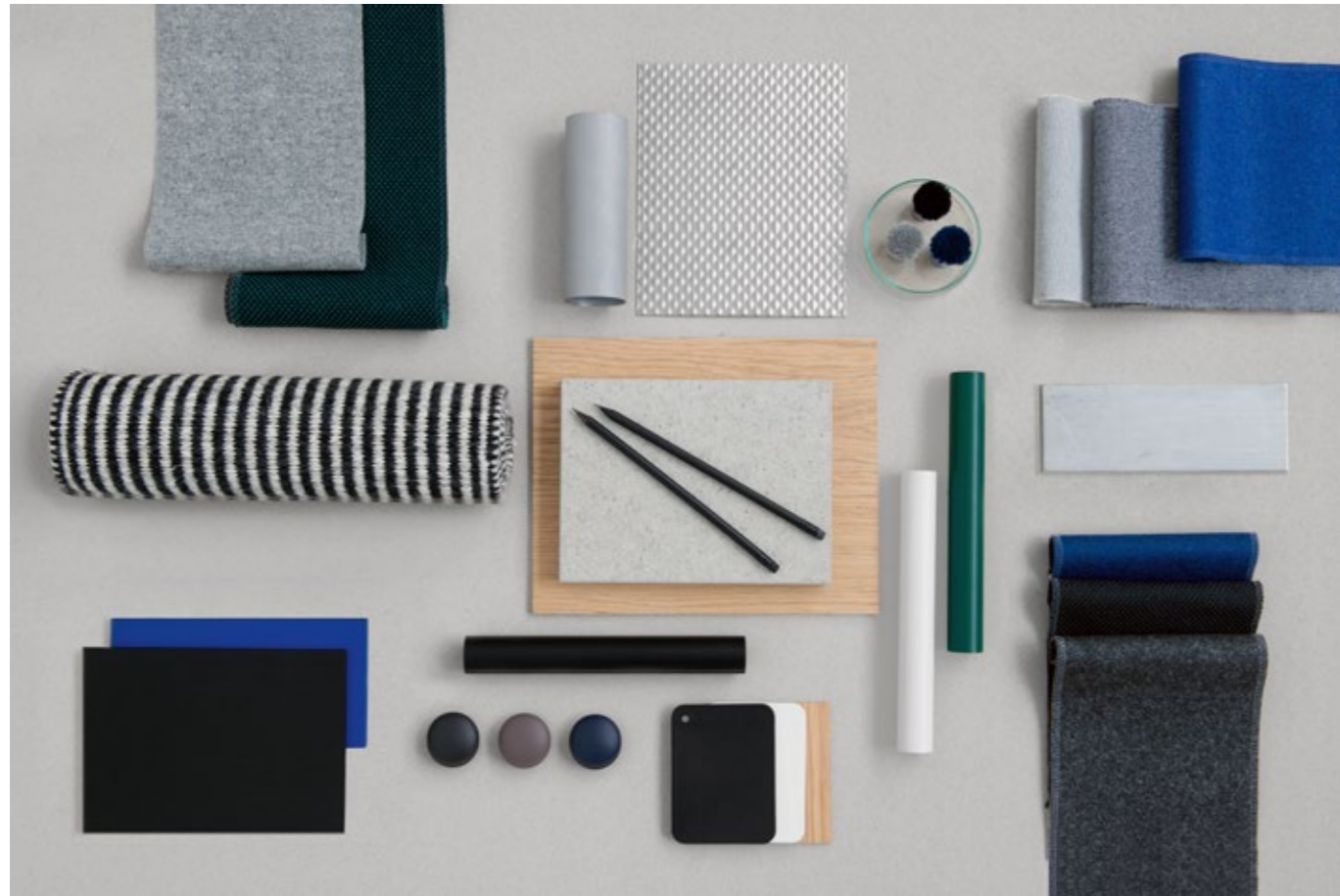


Plastic, 01 basic dark RE
Plano, 67 cognac

Mynt – classic elegance

vitra.

In combinations of black, light grey, white and blasted aluminium, Mynt has an understated classic appearance and attractively pairs with iconic furniture pieces. The wool fabric Cosy 2 in hues of grey and blue creates calm colour surfaces, while Laser RE made of recycled polyester adds great depth of colour with its striking woven structure in duotone shades.



You can customise your Mynt chair at vitra.com using the Vitra Product Configurator.

vitra.



Veneer, 10 natural oak, with protective varnish



Plastic, 05 grey RE Cosy 2, 12 pale blue



Plastic, 01 basic dark RE Laser RE, 77 teal blue/black



Plastic, 05 grey RE Cosy 2, 20 electric blue



Veneer, 10 natural oak, with protective varnish



Plastic, 05 grey RE Plano, 05 cream white/sierra grey



Plastic, 01 basic dark RE Laser RE, 03 dark carbon



Veneer, 10 natural oak, with protective varnish



Plastic, 01 basic dark RE



Plastic, 01 basic dark RE



Plastic, 01 basic dark RE Cosy 2, 10 classic grey

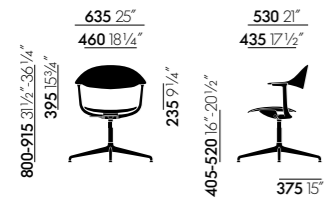


Plastic, 01 basic dark RE Cosy 2, 21 dark blue

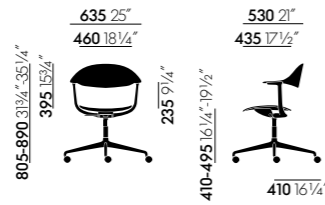
Dimensions

(in accordance with EN 1335-1:2020+A1:2022)

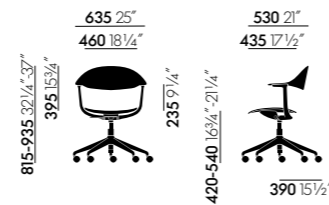
vitra.



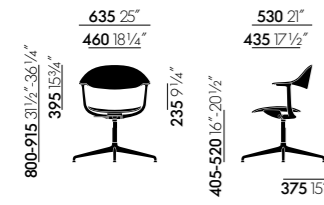
Mynt, plastic, four-star base, glides



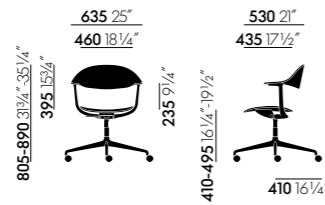
Mynt, plastic, four-star base, castors



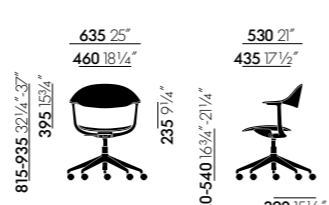
Mynt, plastic, five-star base, castors



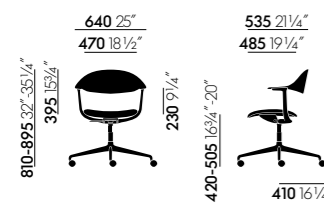
Mynt, plywood, four-star base, glides



Mynt, plywood, four-star base, castors



Mynt, plywood, five-star base, castors



Mynt, upholstery, four-star base, castors

