

# Softshell Chair

Ronan & Erwan Bouroullec, 2008



four-legged base



four-star base



five-star base



Softshell Side Chair

The seat construction of the Softshell Chair ensures a level of comfort that is first revealed upon use: vertical ribs concealed in the back shell adapt to the user, providing freedom of movement as well as superb comfort, even for prolonged periods of sitting. The smooth contours and appealingly soft upholstery over the entire surface give the Softshell Chair its calm, cosy and inviting character.

### four-legged base

- **Backrest and seat:** flexible upper backrest shell. Seat and backrest shell in fibreglass-reinforced polyamide. Seat and backrest upholstery made of recyclable polyurethane foam ‚V-Foam‘. Armrests are integrated in the seat shell. Version in Laser fabric and in leather with two seams along the sides of the backrest.
- **Four-legged base:** polyamide in basic dark with glides.

### four-star base

- **Backrest and seat:** flexible upper backrest shell. Seat and backrest shell in fibreglass-reinforced polyamide. Seat and backrest upholstery made of recyclable polyurethane foam ‚V-Foam‘. Armrests are integrated in the seat shell. With two seams along the sides of the backrest.
- **Four-star base:** aluminium powder-coated in basic dark or with polished finish (swivel function with comfortable seat depth suspension).

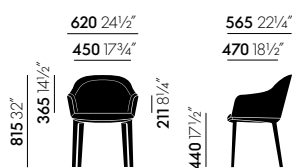
### five-star base

- **Backrest and seat:** seat and backrest shell in fibreglass-reinforced polyamide, flexible upper backrest shell. Seat and backrest upholstery made of recyclable polyurethane foam ‚V-Foam‘. Seat shell with integrated armrests. With two seams along the sides of the backrest.
- **Five-star base:** powder-coated (basic dark) or polished aluminium.
- **Delivery:** includes castor protection (orange or transparent), which must be removed before first use.

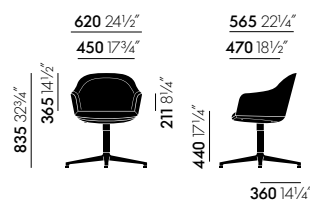
### Softshell Side Chair

- **Backrest and seat:** seat and backrest shell in fibreglass-reinforced polyamide, flexible upper backrest shell. Seat and backrest upholstery made of recyclable polyurethane foam ‚V-Foam‘.
- **Four-legged base:** polyamide in basic dark with glides.
- Due to British fire safety regulations, V-Foam is not used in the UK. Fire retardants would have to be added to the formula, which would make it impossible to recycle V-Foam separately.

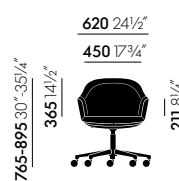
## DIMENSIONS (in accordance with EN 1335-1:2000)



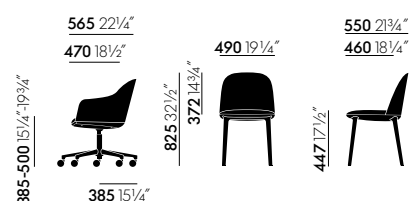
four-legged base



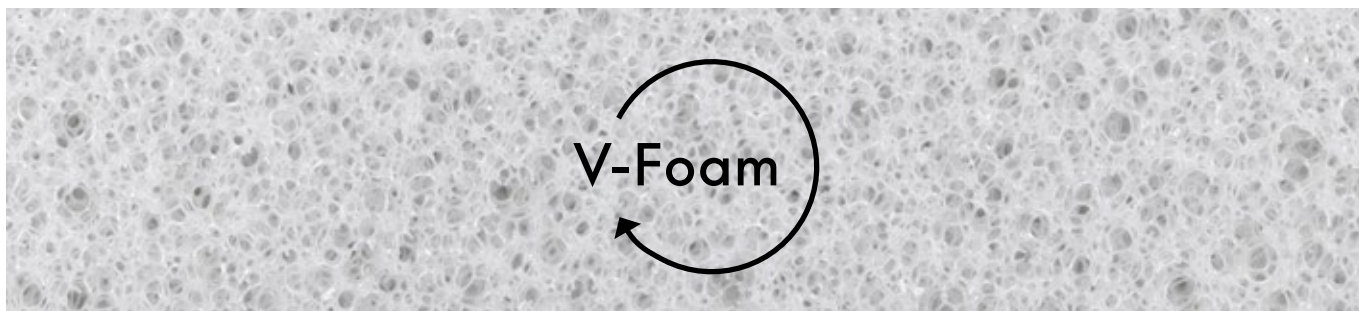
four-star base



five-star base



Softshell Side Chair



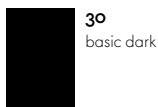
Developed jointly by Vitra and BASF, V-Foam is the world's first economically recyclable polyurethane foam.

Standard polyurethane foam (PU foam) is derived from fossil fuels and utilised extensively worldwide. Its recycling process is very energy-intensive and uneconomical.

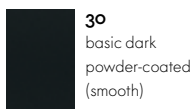
V-Foam, on the other hand, can be melted, reprocessed and returned to the material cycle in its entirety for use in new products. Vitra will gradually incorporate V-Foam for all its upholstered furniture containing moulded foam from 2025.

Due to British fire safety regulations, V-Foam is not used in the UK. Fire retardants would have to be added to the formula, which would make it impossible to recycle V-Foam separately.

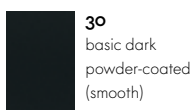
**COLOURS AND MATERIALS**



Four-legged base

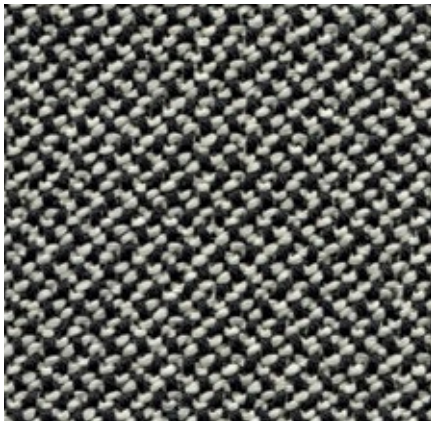


Four-star base



Five-star base

# Credo Heavy use, F120



Credo is a durable woollen fabric made of premium worsted yarn with a pleasant feel. The two- and three-tone colours give this fabric a characteristic structure and vibrant appearance. Credo allows for an effective exchange of heat to ensure comfortable thermal conditions for the sitter. The fabric can also be used in office environments.

Credo is available in 22 colours.

Material	5% polyamide, 95% new wool
Weight	640 g/m <sup>2</sup> (18.9 oz/y <sup>2</sup> )
Width	145 cm +/- 2 cm (57")
Abrasion resistance	100,000 Martindale
Fastness to light	Type 6
Pilling	Grade 4-5
Fastness to rubbing	Grade 4-5 dry and wet



# Dumet Medium use, F80



Dumet is a cotton blend in a plain weave with a lively appearance. The natural mixed tones create an elegant look with an Italian flair. Dumet is soft and cool to the touch.

Dumet is available in 20 colours.

Material	9% polyamide, 8% linen, 22% wool, 46% cotton, 15% rayon
Weight	485 g/m <sup>2</sup> (14.3 oz/y <sup>2</sup> )
Width	147 cm +/- 2 cm (58")
Abrasion resistance	40,000 Martindale
Fastness to light	Type 5
Pilling	Grade 3-4
Fastness to rubbing	Grade 3-4 dry and wet



# Hola Medium use, F40

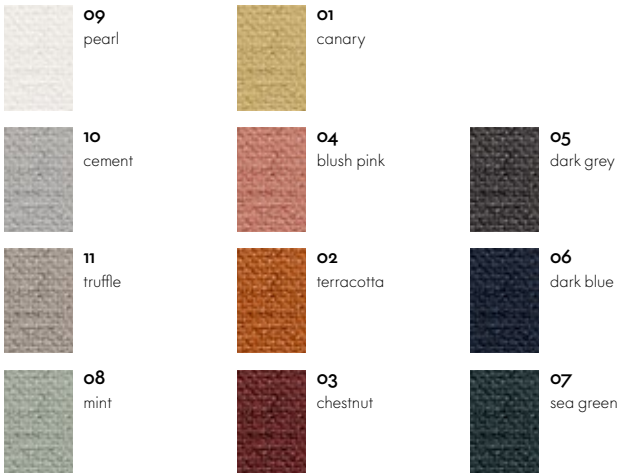
**vitra.**



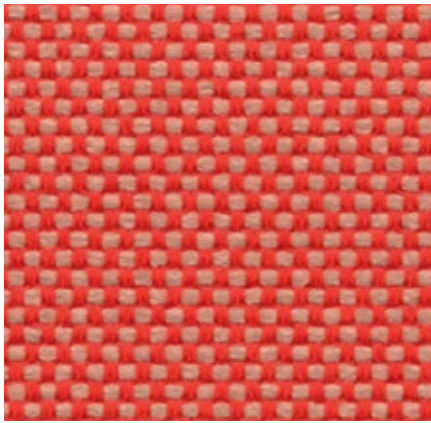
Hola is a textile made from 100% recycled polyester. Its finely textured threads are woven into a soft comfortable fabric with an understated expression and almost cotton-like feel. It is simultaneously also resilient enough to be used in semi-public spaces such as hotel lobbies. Hola is Oekotex-certified and manufactured using a dyeing process with a closed water cycle.

Hola is available in 11 colours.

Material	100% recycled polyester
Weight	470 g/m <sup>2</sup> (13.9 oz/y <sup>2</sup> )
Width	142 cm +/- 2 cm (56")
Abrasion resistance	60,000 Martindale
Fastness to light	Type 5
Pilling	Grade 4-5
Fastness to rubbing	Grade 4-5 dry and wet



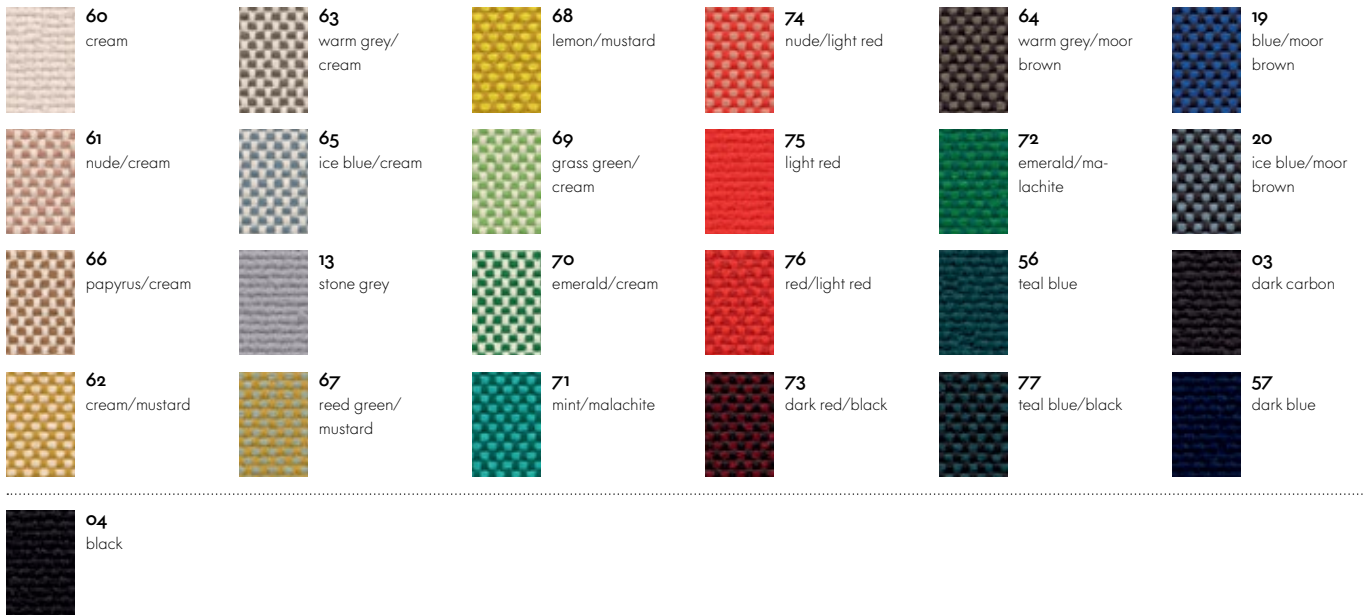
# Laser RE Heavy use, F40



The environmentally friendly fabric Laser RE is made from recycled polyester. It has a distinctive woven appearance, which is particularly accentuated by contrasting duotones in a varied palette of 25 colours. Practical and easy to care for, as well as durable and highly abrasion-resistant, Laser RE is also well suited for office environments.

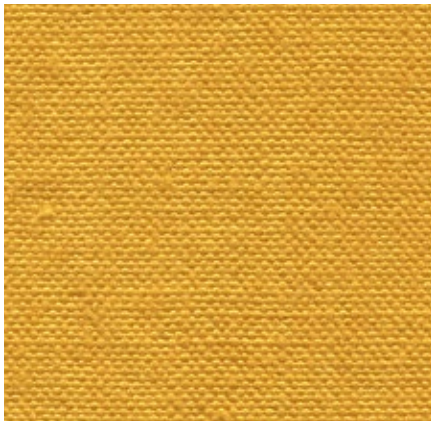
Laser RE is available in 25 colours.

Material	100% recycled polyester
Weight	520 g/m <sup>2</sup> (15.3 oz/y <sup>2</sup> )
Width	144 cm +/- 2 cm (57")
Abrasion resistance	100,000 Martindale
Fastness to light	Type 6
Pilling	Grade 4-5
Fastness to rubbing	Grade 4-5 dry and wet



# Linho Residential use, F8o

**vitra.**



The high-quality linen fabric Linho is manufactured in Belgium, from the plant to the finished textile. It has the slightly irregular appearance that is typical of linen yarn. The fabric is cool and dry to the touch, with natural earthy tones that exhibit a Mediterranean flair. Due to its high percentage of linen, Linho tends to form elegant creases, lending a natural look to soft upholstered furniture.

Linho is available in 10 colours.

Material	9% polyamide, 91% linen
Weight	450 g/m <sup>2</sup> (13.3 oz/y <sup>2</sup> )
Width	137 cm +/- 2 cm (54")
Abrasion resistance	18,000 Martindale
Fastness to light	Type 5
Pilling	Grade 3-4
Fastness to rubbing	Grade 3 dry and wet



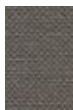
**01**  
pearl



**07**  
olive



**05**  
rose quartz



**03**  
truffle



**02**  
sand



**08**  
steel blue



**06**  
chestnut



**04**  
canola

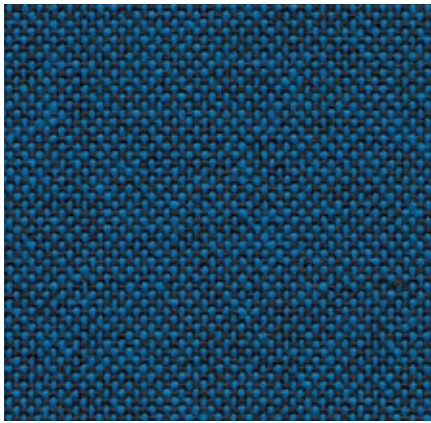


**09**  
atlantic



**10**  
moor brown

# Plano Heavy use, F30



Plano is a robust plain weave with a flat, even texture. The wide palette of duotones with new, delicate washed-out shades includes many relatively neutral hues, a good number of which are coordinated with the Hopsak colour range. Thanks to its durability and longevity, Plano is also an ideal choice for office furnishings.

Plano is available in 39 colours.

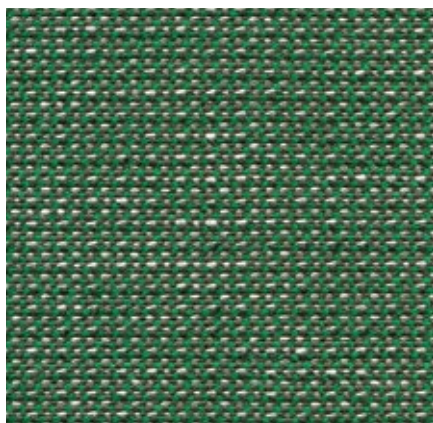
Material	100% polyester
Weight	265 g/m <sup>2</sup> (7.8 oz/y <sup>2</sup> )
Width	142 cm +/- 2 cm (56")
Abrasion resistance	80,000 Martindale
Fastness to light	Type 6
Pilling	Grade 4-5
Fastness to rubbing	Grade 4-5 dry and wet

 <b>05</b> cream white/ sierra grey	 <b>34</b> grass green/ forest	 <b>40</b> coconut/forest	 <b>81</b> blue/coconut	 <b>19</b> sierra grey	 <b>73</b> nero/coconut
 <b>18</b> light grey/sierra grey	 <b>61</b> classic green/ cognac	 <b>52</b> mint/forest	 <b>13</b> nero/ice blue	 <b>74</b> sierra grey/nero	 <b>66</b> nero
 <b>39</b> yellow/pastel green	 <b>41</b> classic green/ forest	 <b>43</b> petrol/nero	 <b>86</b> dark blue/brown	 <b>69</b> dark grey	 <b>54</b> brown
 <b>68</b> avocado	 <b>17</b> forest/sierra grey	 <b>12</b> light grey/ice blue	 <b>87</b> nero/cream white	 <b>62</b> dark grey/nero	 <b>75</b> marron/nero

---

 <b>11</b> marron/cognac	 <b>72</b> poppy red	 <b>84</b> poppy red/ champagne	
 <b>67</b> cognac	 <b>07</b> orange	 <b>15</b> pink/sierra grey	 <b>99</b> cognac/parchment
 <b>98</b> dark red/nero	 <b>96</b> red/cognac	 <b>16</b> dark red/ice blue	 <b>20</b> tobacco/cream white
 <b>97</b> red/coconut	 <b>63</b> red/poppy red	 <b>80</b> coffee	 <b>03</b> parchment/ cream white

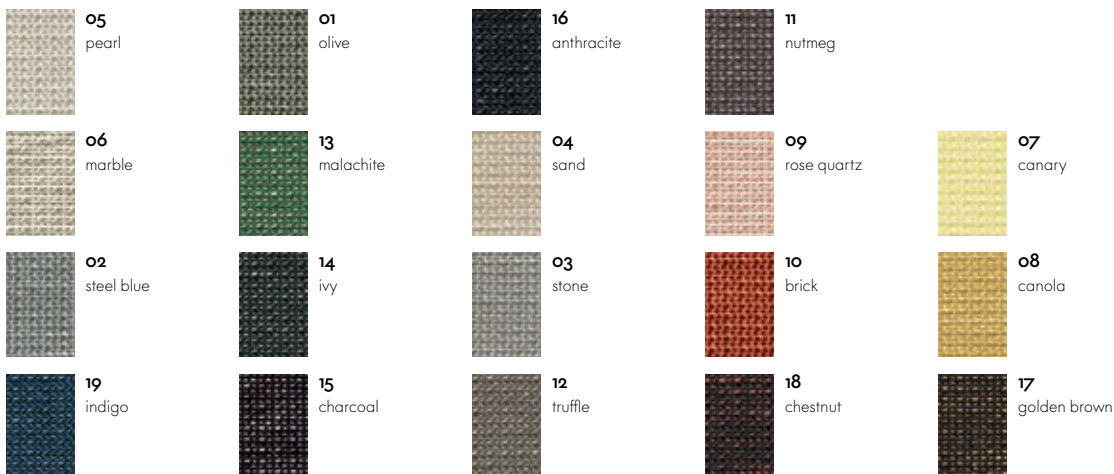
# Reed Medium use, F100



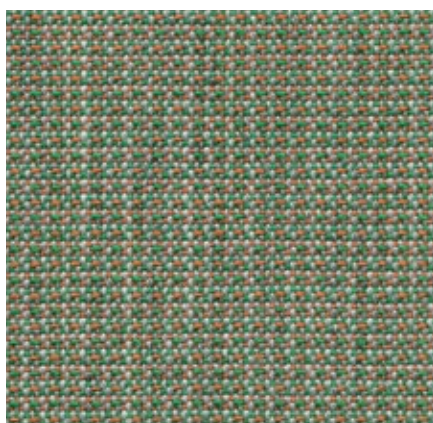
The elegant finely patterned fabric Reed is a blend of linen, wool and cotton. The structure of the fabric designed by Hella Jongerius has a hand-made look, its irregular lively linen yarn lending the fabric a natural expression. Reed is cool and soft to the touch and can be perfectly combined with other fabrics and materials.

Material	7% polyamide, 25% new wool, 20% linen, 48% cotton
Weight	400 g/m <sup>2</sup> (11.8 oz/y <sup>2</sup> )
Width	142 cm +/- 2 cm (56")
Abrasion resistance	50,000 Martindale
Fastness to light	Type 5
Pilling	Grade 3-4
Fastness to rubbing	Grade 3-4 dry and wet

Reed is available in 19 colours.



# Tress Heavy use, F80



Tress is a flat woven fabric with a lively appearance that derives from the contrast between its even structure and the natural melange of colours. The combination of yarns with varied hues creates a harmonious and yet vibrant look. Thanks to its high wool content, Tress is a durable, easy-care material with a home-like aesthetic.

Material	8% polyamide, 73% new wool, 19% polyester
Weight	310 g/m <sup>2</sup> (9.1 oz/y <sup>2</sup> )
Width	142 cm +/- 2 cm (56")
Abrasion resistance	40,000 Martindale
Fastness to light	Type 6
Pilling	Grade 4-5
Fastness to rubbing	Grade 4-5 dry and wet

Tress is available in 22 colours.



## Twill Heavy use, F60



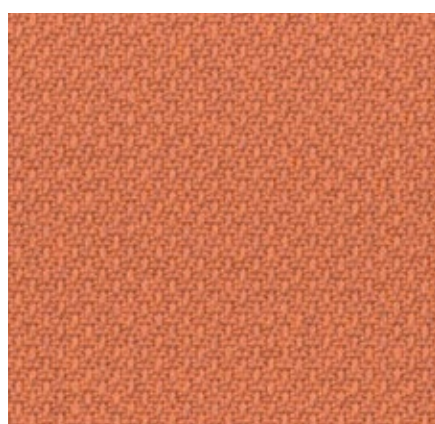
The high percentage of natural fibres gives Twill very pleasant tactile qualities and an inviting appearance. Extremely durable with excellent abrasion resistance, it combines the qualities typically found in home furnishings with the demanding requirements of the project sector.

Twill is available in 18 colours.

Material	30% polyamide, 70% new wool
Weight	325 g/m <sup>2</sup> (9.6 oz/y <sup>2</sup> )
Width	155 cm +/- 2 cm (61")
Abrasion resistance	100,000 Martindale
Fastness to light	Type 6
Pilling	Grade 4-5
Fastness to rubbing	Grade 4-5 dry and wet



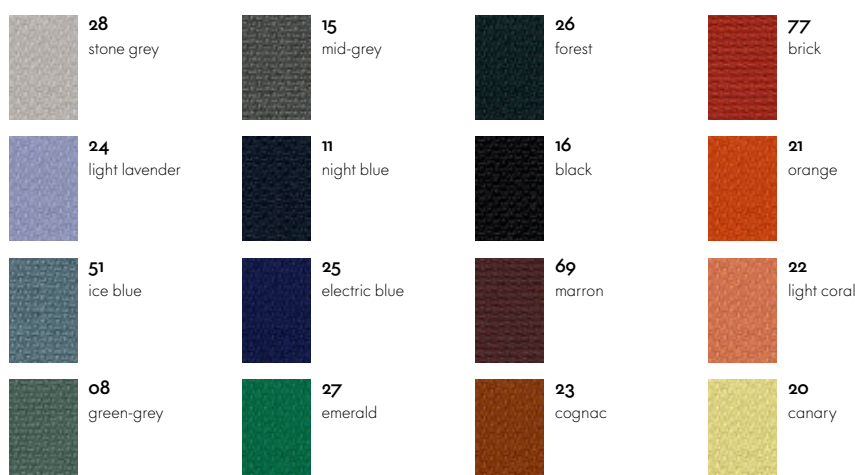
## Volo Heavy use, F60



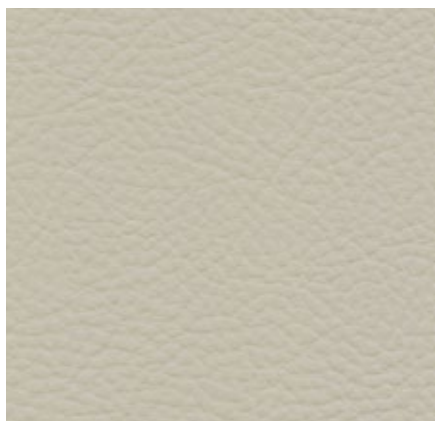
Volo is a finely structured wool blend with a refined weave that gives it an elegant appearance. This expressive textile shows strong solid colours to full advantage while simultaneously offering pleasant tactile qualities. With its soft look and appealing texture, Volo is a perfect fit for home interiors, but it is also well suited for use in the contract sector.

Volo is available in 16 colours.

Material	15% polyamide, 85% new wool
Weight	435 g/m <sup>2</sup> (12.8 oz/y <sup>2</sup> )
Width	145 cm +/- 3 cm (57")
Abrasion resistance	100,000 Martindale
Fastness to light	Type 6
Pilling	Grade 4-5
Fastness to rubbing	Grade 4-5 dry and wet



## Leather Heavy use, L2o



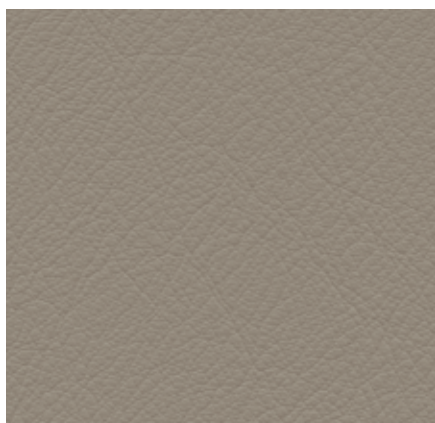
The standard grade leather used by Vitra is a robust cowhide leather, dyed-through, pigmented and embossed with an even grain pattern. Since it is hard-wearing and easy to maintain, it can also be used in office environments.

Leather is available in 16 colours.

Material	Robust cowhide with a distinctive, even grain
Fastness to light	Type 6
Thickness	1,1–1,3 mm
Fastness to rubbing	Grade 4 dry and wet



## Leather Premium F Medium use, L5o



Leather Premium F is a relatively smooth cowhide leather with a flat grain and fine top sheen. It is dyed-through, lightly pigmented and processed with a tanning agent extracted from olive tree leaves (a waste product of the olive harvest).

Leather Premium F is available in 22 colours.

Material	Semi-aniline nappa leather with a very soft and supple feel, vegetable tanned
Fastness to light	Type 5
Thickness	1,1–1,3 mm
Fastness to rubbing	Grade 4 dry and wet

