

Wiggle Side Chair

Frank Gehry, 1972

vitra.

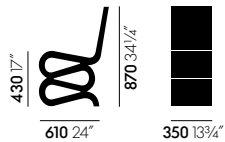


Frank Gehry is well-known for his use of unusual materials. With his furniture series „Easy Edges“ he succeeded in lending a new aesthetic dimension to such an everyday material as cardboard. Although they look surprisingly simple, the „Easy Edges“ pieces have been construc-

ted with an architect's skill and are exceedingly robust and stable.

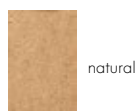
- **Material:** corrugated cardboard, edges made of natural-look hardboard.
- **Color:** natural.

Dimensions

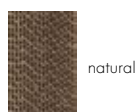


Wiggle Side Chair

Surfaces and colours



natural



natural

Seat shell

Article no. 09161408

Vitra is represented worldwide. Your local Vitra partner can be found at: www.vitra.com.

info@vitra.com | US 2017

www.vitra.com/wigglesidechair

