

Bistro Table

vitra.

Ronan & Erwan Bouroullec, 2009/2010



The Bistro Tables were conceived in connection with the Softshell Chair and reiterate the shape of its elegant cruciform base. Due to its simple form, the table can be combined with a wide variety of chairs; the version with a solid core laminate top is also suited for outdoor use. The Bistro Tables are available in both sitting and standing heights.

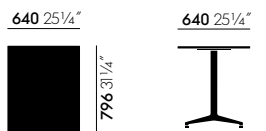
Materials

- **Table tops available in three materials:** melamine faced, white surface, smooth straight plastic edge (19 mm); light or dark oak veneer (Europe) (19 mm); solid core laminate in the colours white or black with black edge (12 mm). The solid core table top in black has an additional anti-fingerprint coating.

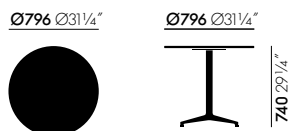


The version of the Bistro Table – in both heights – with a solid core laminate top and powder-coated base in basic dark is weather resistant and suitable for use on terraces, balconies and in gardens.

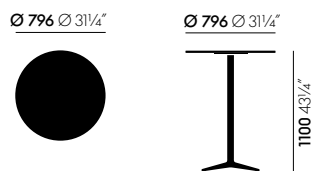
DIMENSIONS



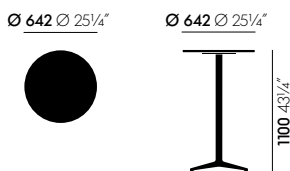
Rectangular table, indoor, 640 x 796 mm



Round table, indoor, Ø 796 mm



Round table, indoor, Ø 796 mm



Round table, indoor, Ø 642 mm

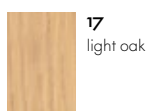
SURFACES AND COLOURS



01
white (textured)



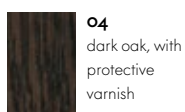
03
white (textured)



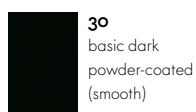
17
light oak



30
black (textured)



04
dark oak, with
protective
varnish



30
basic dark
powder-coated
(smooth)

Table top

Base

