



IM#: 20-0143509

**Steelcase® Flex Collection**

**Steelcase**

# Empowering Teams

The Steelcase Flex Collection is a range of flexible and reconfigurable workplace solutions designed for dynamic, collaborative teams. From mobile power to markerboards and storage to screens — the Steelcase Flex Collection empowers people to adapt their space on demand, and work better.



IM#: 19-0117612



IM#: 20-0143510

## HOMES FOR TEAMS

The Steelcase Flex Collection creates productive, flexible and inspiring homes for teams that are just right for all the ways they work. With endless ways to personalize their space to their team and individual preferences, the Steelcase Flex Collection gives people a sense of belonging and shared purpose.



IM#: 19-0116891

## FLEXIBLE + ADAPTABLE

The Steelcase Flex Collection supports a resilient workplace with a range of flexible and fluid elements that readily adapt as an organization's needs change. Whether it's daily flexibility to support short term team activities or floorplan adaptability that supports longer term organizational needs, Steelcase Flex creates a resilient workplace — now and in the future.



IM#: 19-0117609

## SUPPORTS COLLABORATION

Dynamic work demands tools and solutions that support brainstorming, agile-inspired activities and keeping work visible. The Steelcase Flex Collection is a holistic system that provides ample ways for teams to create, share and move their work wherever they go, while a variety of horizontal work surfaces give teams a place to gather and connect.



IM#: 19-0117646

## ME + WE

From collaboration to individual focus work to a social gathering, the Steelcase Flex Collection supports multiple work modes by creating environments that can flex as work changes throughout the day. Steelcase Flex supports the needs of the team without losing sight of the individual.



IM#: 21-0148170

#### **DYNAMIC TEAM NEIGHBORHOODS**

The Steelcase Flex Collection creates dynamic team neighborhoods for high-performing teams in the modern workplace. By providing teams with all the essentials to adapt their space as needed, keep their work visible and shape team identity, Steelcase Flex supports the changing activities and behaviors of hyper-collaborative teams.

# Steelcase Flex Collection

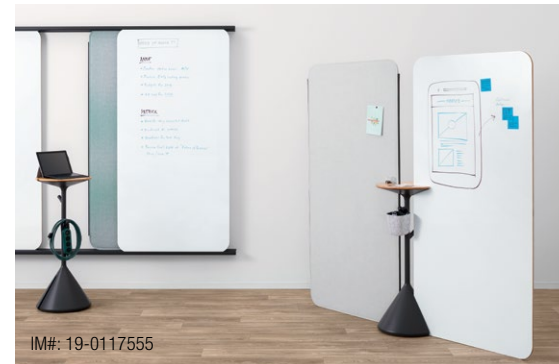
The Steelcase Flex Collection is a family of integrated products that work well on their own, but are better together. Clever details and thoughtful integrations between products allow the entire collection to create productive and flexible team spaces.



IM#: 19-0117500

## SCREENS

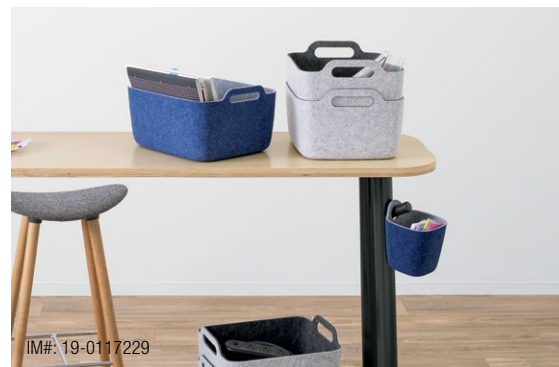
The lightweight freestanding screens come in three sizes, are tackable and provide infinite possibilities for personal privacy, space division and keeping information visible. The magnetic edges allow for a variety of configurations and can be easily integrated across the Steelcase Flex Collection.



IM#: 19-0117555

## MARKERBOARD SOLUTIONS

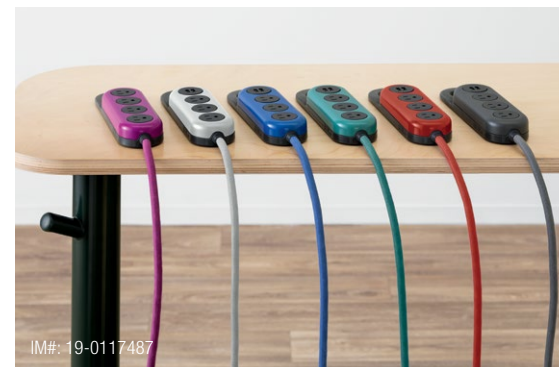
Create, share and showcase your work with Steelcase Flex Markerboard Solutions. Lightweight markerboards, a multi-purpose stand and mountable wall rails allow the team to surround themselves with information and keep everyone in the loop.



IM#: 19-0117229

## ACCESSORIES

The basket and cup are designed to hold markers, sticky notes and anything else the team needs to visualize their ideas. The basket and cup can be used across the collection to provide functionality, storage and personalization.



IM#: 19-0117487

## POWER HANGER

The ultra-mobile power hanger lets you connect to power nearby at all times. Weighted and rubberized to stay put on flat surfaces, it also can hang on a peg or board clip when not in use.



IM#: 20-0143756

## ACTIVE FRAMES

Active Frames are adaptable structures that define space by creating productive, flexible and inspiring homes for teams in the open office. With 360° access and endless, reconfigurable options Active Frames supports how teams work and helps make any space higher performing.



IM#: 19-012662

## MOBILE POWER

A sleek and smart mobile power solution, Steelcase Flex Mobile Power gives teams and individuals the freedom to work anywhere they want. Designed and developed in partnership with Anker, a global leader in charging technology, Mobile Power is the first of its kind enterprise-level mobile power solution for the workplace.



IM#: 19-0117548

## HEIGHT-ADJUSTABLE DESK

Designed for mobility and function, the height-adjustable desk comes with integrated rollers that allow for movement, one-cord-out integrated power that hosts up to seven plugs, and user adjustable curved screens that can be configured by anyone for both privacy and modesty.



IM#: 19-0117213

## TABLES

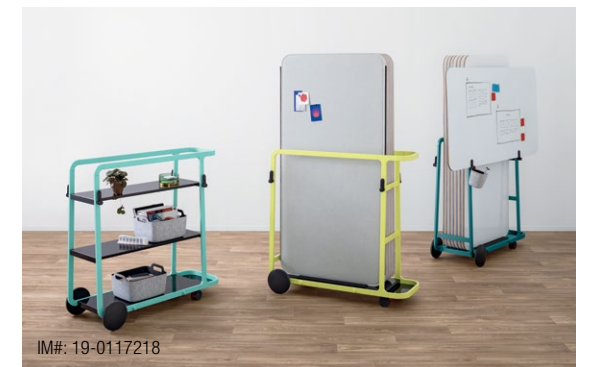
The family of standing and seated-height work tables can be used for a wide array of team activities — from individual focus work to collaborative work; they can also be used in in-between spaces. Tables come with glides and optional wheels for easy movement, and pegs allow you to hang the power hanger, cable catch or other personal items.



IM#: 19-0117222

## ACOUSTIC BOUNDARY

The movable acoustic boundary provides flexible space division, acoustic privacy and allows for the integration of markerboards and screens to display information.



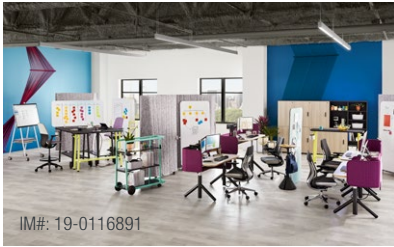
IM#: 19-0117218

## CARTS

The cart family provides team personalization and storage, a place to display information, while also creating boundaries for space division. Designed for mobility, the team cart and board cart keeps all the team's essentials accessible and visible.

## SURFACE MATERIALS

Achieve just the right aesthetic for your space with a wide range of materiality options and finishes in the Steelcase Flex Collection. Below are just a few palette examples from the images in this brochure.



### VIBRANT + BOLD



**Gamut**  
3468-601



**Obsidian**  
4B20



**Mint**  
PerfectMatch  
Pantone® 331



**Yellow**  
PerfectMatch  
Pantone® 923



### BRIGHT + REFINED



**Bisque Noce**  
2HBN



**Citrine**  
1ATK



**Cloud**  
1ATB



**Dark Heather Grey**  
PET P631



### ORGANIC + NATURAL



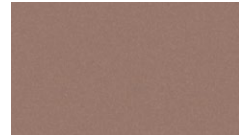
**Merle Textured Paint**  
7360



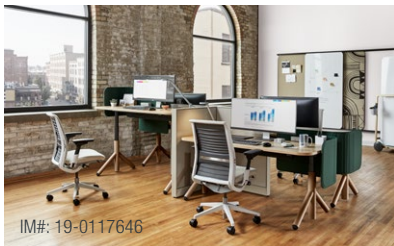
**Clay Noce**  
2HCN



**Olivine Accent Paint**  
1ATH



**Matte Copper**  
4B25



### LUXE + NEUTRAL



**Matte Brass**  
4B22



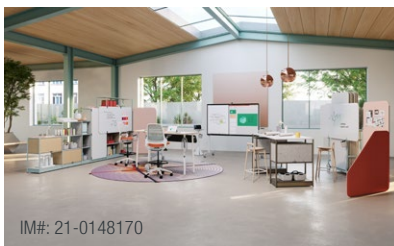
**Cogent Connect  
Jungle** 5S94



**Planked Oak**  
3P61



**Antelope Brushed  
Flannel** 3797-102



### AIRY + LIGHT



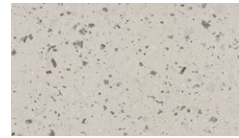
**Sea Salt Accent Paint**  
1ATJ



**Clear Oak Laminate**  
2HAK



**Rose Quartz**  
P221



**Reclaimed Aggregate**  
2UH1

The swatches above represent surface materials shown in this brochure. Colors may vary slightly from actual material. To see additional materials, colors, and applications, visit [Steelcase Flex Collection](#) online.